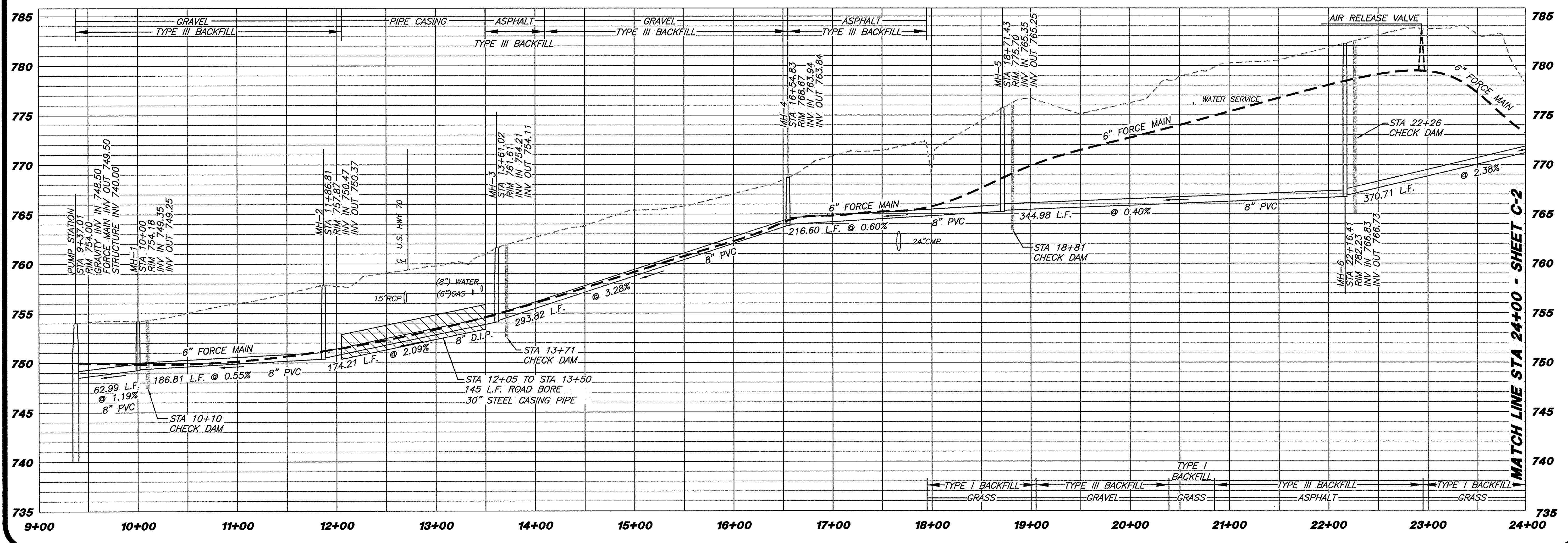


NOTES

1. THE CONTRACTOR IS SPECIFICALLY CAUTIONED THAT THE LOCATION AND/OR ELEVATION OF EXISTING UTILITIES AS SHOWN ON THESE PLANS IS BASED ON RECORDS AND WHERE POSSIBLE MEASUREMENTS TAKEN IN THE FIELD. THIS INFORMATION IS NOT TO BE RELIED UPON AS BEING EXACT OR COMPLETE. THE CONTRACTOR MUST CALL TENNESSEE ONE CALL AND ANY UTILITY THAT DOES NOT SUBSCRIBE TO ONE CALL AT LEAST 72 HOURS BEFORE ANY EXCAVATION, TO REQUEST EXACT FIELD LOCATION OF THE UTILITIES. IT SHALL BE THE RESPONSIBILITY OF THE CONTRACTOR TO RELOCATE ALL EXISTING UTILITIES WHICH CONFLICT WITH THE PROPOSED IMPROVEMENTS SHOWN ON THE PLANS.
2. THE 6" FORCE MAIN IS SHOWN OFFSET FROM THE GRAVITY LINE FOR CLARITY. THE FORCE MAIN SHALL BE INSTALLED IN THE SAME TRENCH AS THE GRAVITY LINE.



**MIDTOWN
SANITARY SEWER**

**LAND DEVELOPMENT
SOLUTIONS**

**SANITARY SEWER
STA. 9+37.01
TO STA. 24+00**

DRAWING DESCRIPTION:

NO.	DATE	REVISION
1	2-15-01	ADDED BACKFILL TYPES IN PROFILE



DRAWN BY: **BB**
 CHECKED: **EB**
 APPROVED: **SB**
 JOB NO. 2-0-16
 H: 1"=50'
 V: 1"=5'
 SCALE: 10/16/00
 DATE

C-1
SHEET NO.

PROJECT:
 310 SIMMONS RD., SUITE K • KNOXVILLE, TENNESSEE 37922 • PH: 423-671-2281

ROANE COUNTY, TENNESSEE