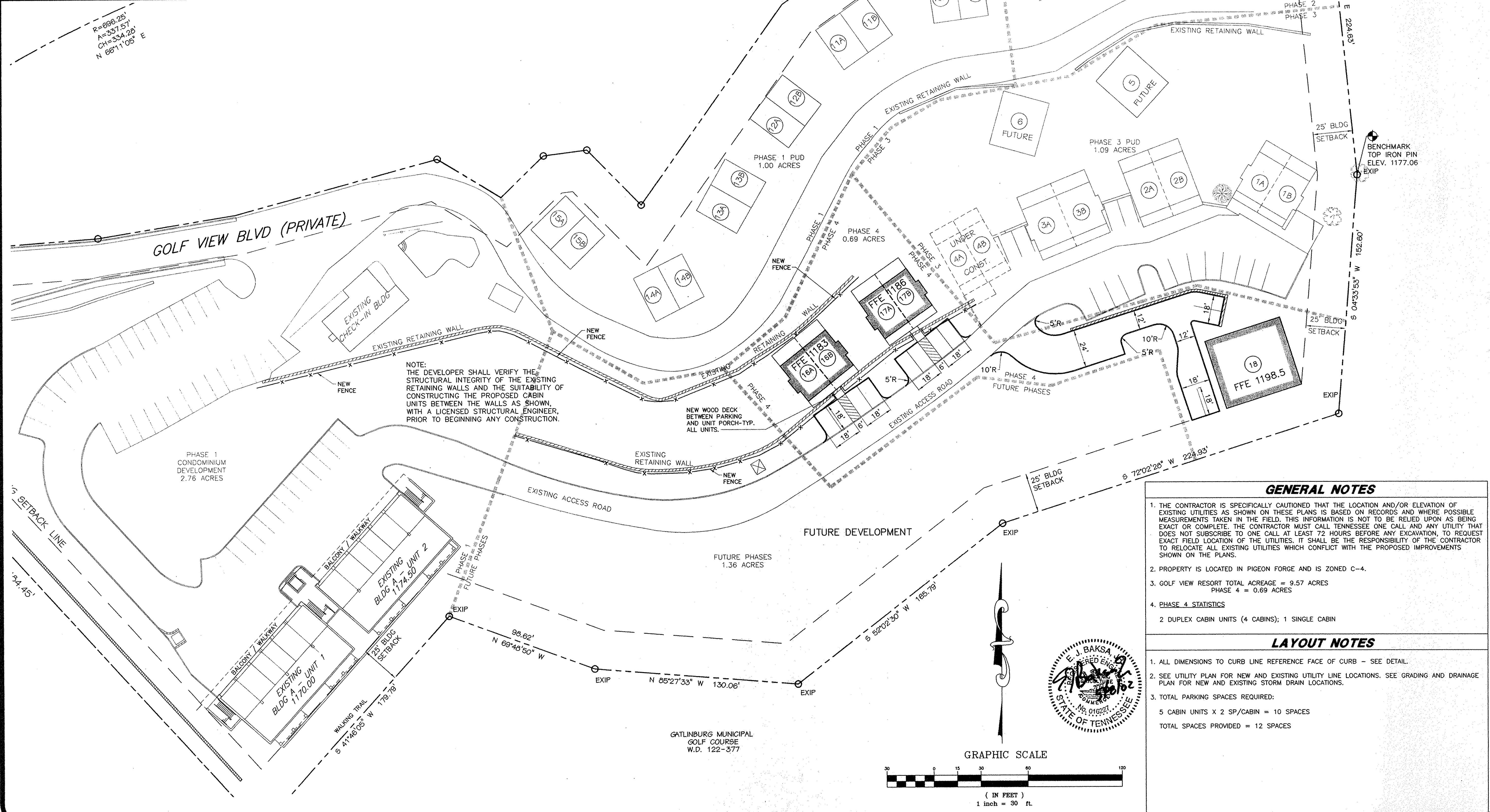
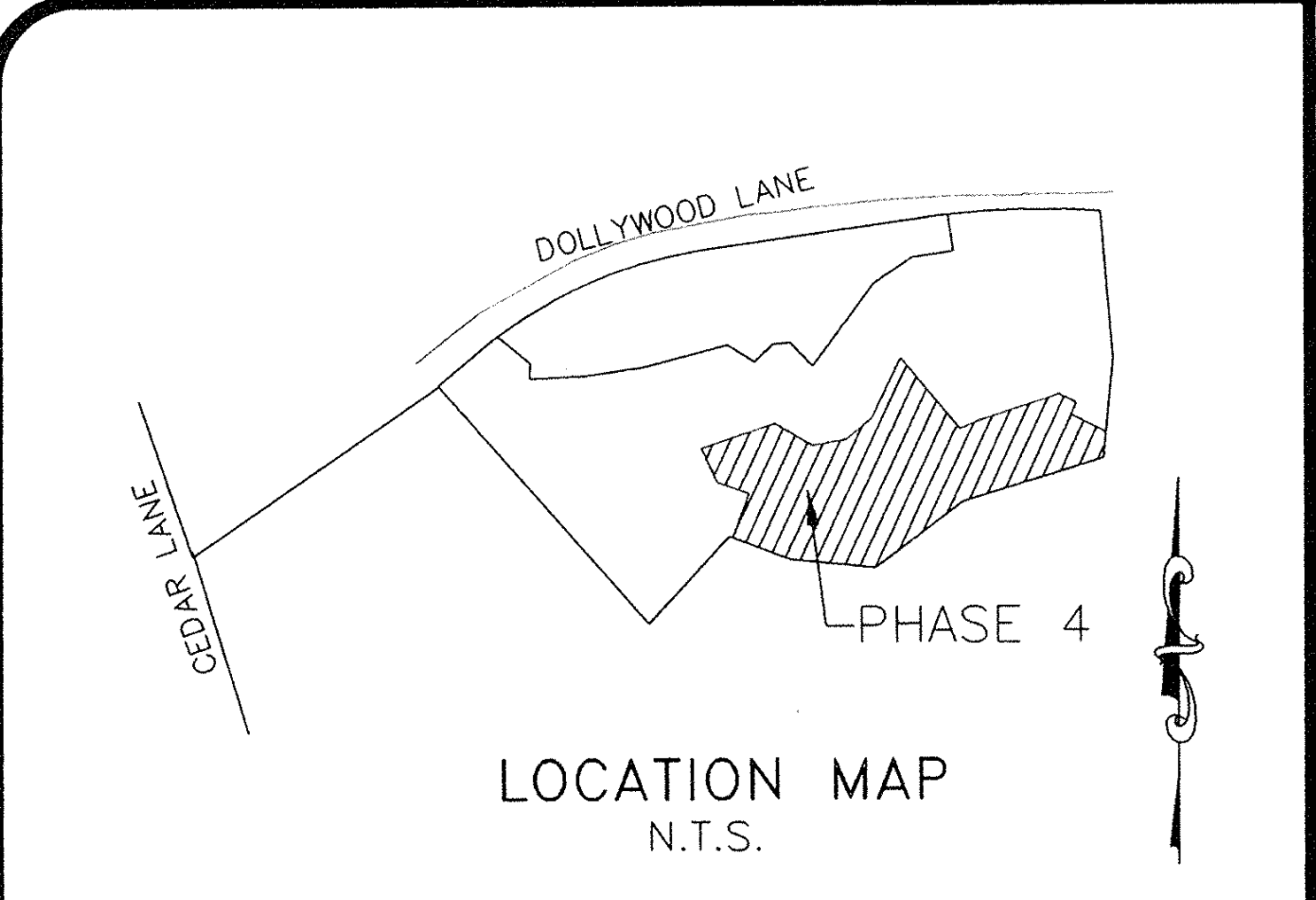


NO.	DATE	REVISION
1	3/25/02	REVISED PHASE LINES
2	5/09/02	RELOCATED CABIN 18 AND ELIMINATED CABIN 19

**PRELIMINARY  
NOT FOR  
CONSTRUCTION  
FOR  
PIGEON FORGE  
REVIEW ONLY**

DRAWN BY	<b>BB</b>
CHECKED	<b>EQB</b>
APPROVED	<b>EQB</b>
JOB NO.	20211
SCALE	1"=30'
DATE	3/15/02

**C-1**  
SHEET NO.



**GENERAL NOTES**

1. THE CONTRACTOR IS SPECIFICALLY CAUTIONED THAT THE LOCATION AND/OR ELEVATION OF EXISTING UTILITIES AS SHOWN ON THESE PLANS IS BASED ON RECORDS AND WHERE POSSIBLE MEASUREMENTS TAKEN IN THE FIELD. THIS INFORMATION IS NOT TO BE RELIED UPON AS BEING EXACT OR COMPLETE. THE CONTRACTOR MUST CALL TENNESSEE ONE CALL AND ANY UTILITY THAT DOES NOT SUBSCRIBE TO ONE CALL AT LEAST 72 HOURS BEFORE ANY EXCAVATION, TO REQUEST EXACT FIELD LOCATION OF THE UTILITIES. IT SHALL BE THE RESPONSIBILITY OF THE CONTRACTOR TO RELOCATE ALL EXISTING UTILITIES WHICH CONFLICT WITH THE PROPOSED IMPROVEMENTS SHOWN ON THE PLANS.
2. PROPERTY IS LOCATED IN PIGEON FORGE AND IS ZONED C-4.
3. GOLF VIEW RESORT TOTAL ACREAGE = 9.57 ACRES  
PHASE 4 = 0.69 ACRES
4. PHASE 4 STATISTICS  
2 DUPLEX CABIN UNITS (4 CABINS); 1 SINGLE CABIN

**LAYOUT NOTES**

1. ALL DIMENSIONS TO CURB LINE REFERENCE FACE OF CURB - SEE DETAIL.
2. SEE UTILITY PLAN FOR NEW AND EXISTING UTILITY LINE LOCATIONS. SEE GRADING AND DRAINAGE PLAN FOR NEW AND EXISTING STORM DRAIN LOCATIONS.
3. TOTAL PARKING SPACES REQUIRED:  
5 CABIN UNITS X 2 SP/CABIN = 10 SPACES  
TOTAL SPACES PROVIDED = 12 SPACES

C:\LDS Projects\golfview\dwg\2002\4-26-02\GV-Phase 4 Revised.dwg May 08, 2002 - 11:21am Breck