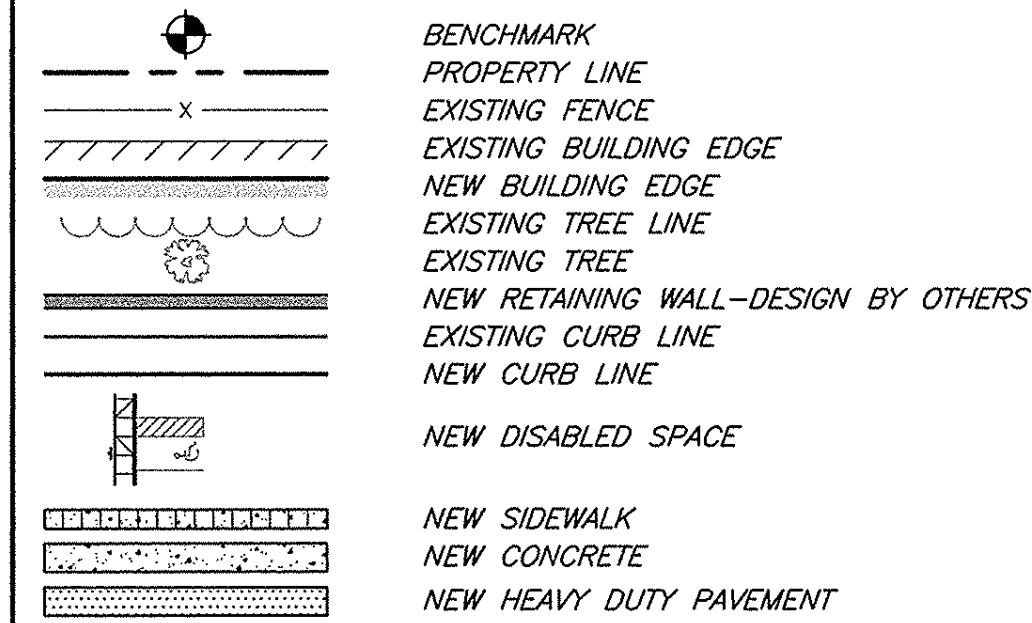


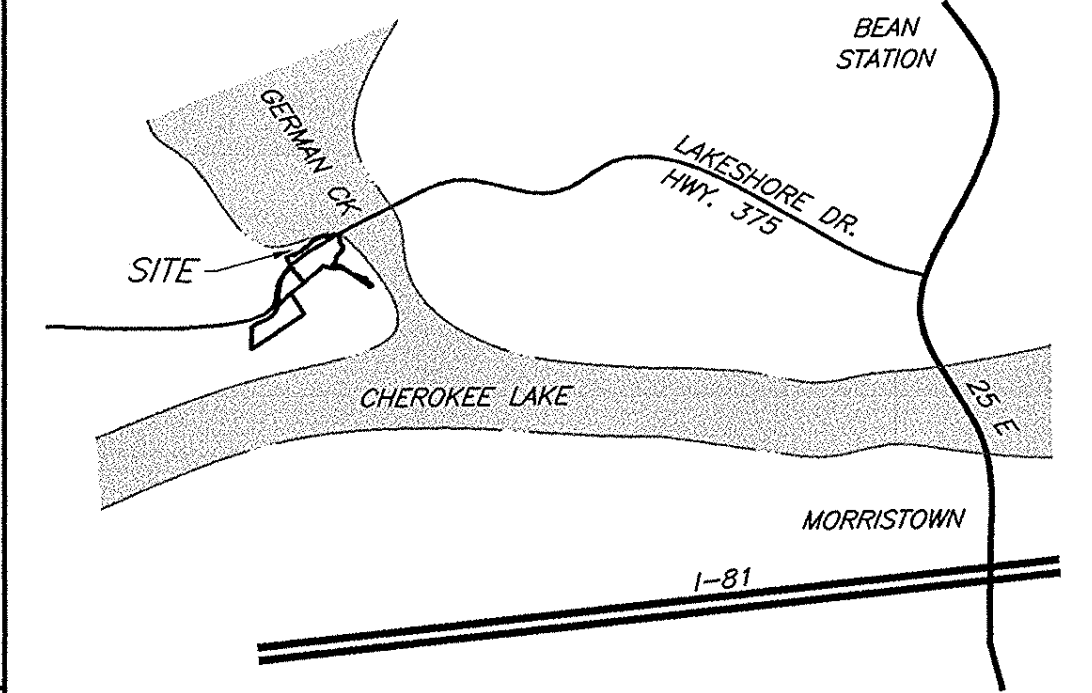
**LEGEND**



**GENERAL NOTES**

1. THE CONTRACTOR IS SPECIFICALLY CAUTIONED THAT THE LOCATION AND/OR ELEVATION OF EXISTING UTILITIES AS SHOWN ON THESE PLANS IS BASED ON RECORDS AND WHERE POSSIBLE MEASUREMENTS TAKEN IN THE FIELD. THIS INFORMATION IS NOT TO BE RELIED UPON AS BEING EXACT OR COMPLETE. THE CONTRACTOR MUST CALL TENNESSEE ONE CALL AND ANY UTILITY THAT DOES NOT SUBSCRIBE TO ONE CALL AT LEAST 72 HOURS BEFORE ANY EXCAVATION, TO REQUEST EXACT FIELD LOCATION OF THE UTILITIES. IT SHALL BE THE RESPONSIBILITY OF THE CONTRACTOR TO RELOCATE ALL EXISTING UTILITIES WHICH CONFLICT WITH THE PROPOSED IMPROVEMENTS SHOWN ON THE PLANS.
2. DEVELOPER: CHEROKEE LAKE DEVELOPMENT, LLC  
FRANKLIN SQUARE  
9724 KINGSTON PIKE, SUITE 206  
KNOXVILLE, TENNESSEE 37922  
PH. 865-357-7700
3. SURVEY BY: EDDIE MILLER, RLS  
LAND DEVELOPMENT SOLUTIONS
4. PROPERTY IS LOCATED IN GRAINGER COUNTY.
5. THESE PLANS SHOW SOME WORK THAT EXTENDS BELOW THE 1080 ELEVATION. APPROVAL FOR THIS WORK SHALL BE OBTAINED FROM TVA PRIOR TO BEGINNING CONSTRUCTION.

**LOCATION MAP**

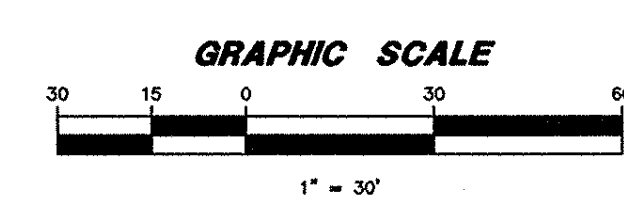
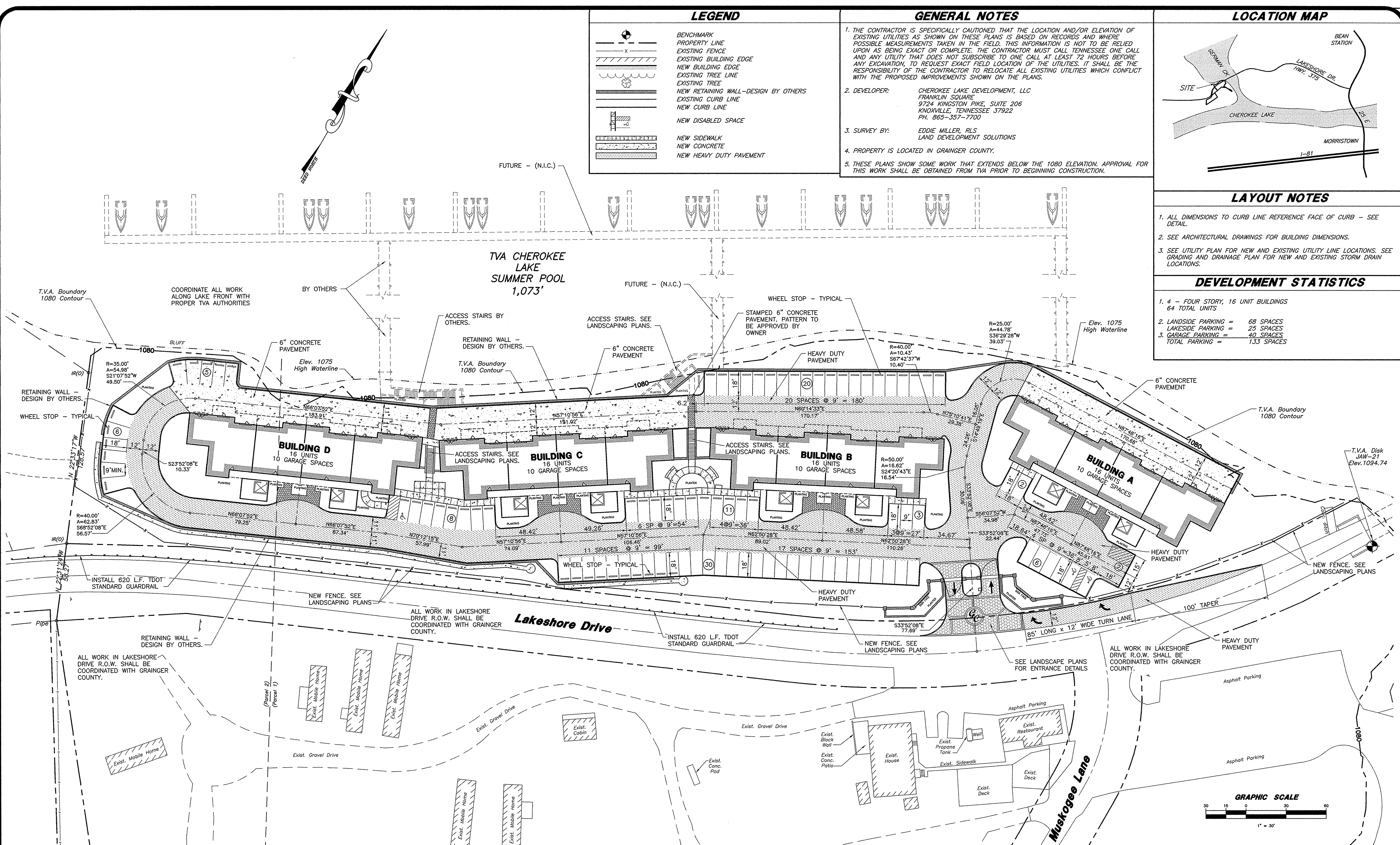


**LAYOUT NOTES**

1. ALL DIMENSIONS TO CURB LINE REFERENCE FACE OF CURB - SEE DETAIL.
2. SEE ARCHITECTURAL DRAWINGS FOR BUILDING DIMENSIONS.
3. SEE UTILITY PLAN FOR NEW AND EXISTING UTILITY LINE LOCATIONS. SEE GRADING AND DRAINAGE PLAN FOR NEW AND EXISTING STORM DRAIN LOCATIONS.

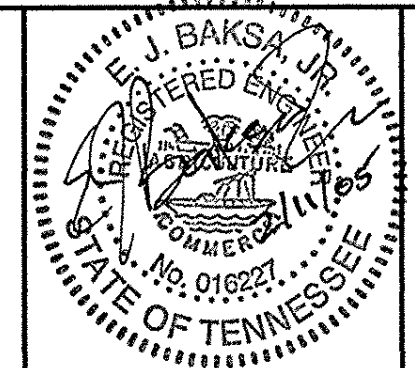
**DEVELOPMENT STATISTICS**

1. 4 - FOUR STORY, 16 UNIT BUILDINGS  
64 TOTAL UNITS
2. LANDSIDE PARKING = 68 SPACES  
LAKESIDE PARKING = 25 SPACES
3. GARAGE PARKING = 40 SPACES  
TOTAL PARKING = 133 SPACES



C:\LDS Projects\GERMAN GREEK RESORT.dwg GCR Master.dwg Feb 14, 2005 - 3:02pm Breck Bowlin

**LAND DEVELOPMENT SOLUTIONS**  
310 SIMMONS RD., SUITE K • KNOXVILLE, TENNESSEE 37922  
PH. 865-671-2281



**Project**  
*The Bluff @ German Creek Resort  
Mid Rise Condos  
Grainger County, Tennessee*

**Client**  
*Cherokee Lake Development, LLC*

**Revisions**

No.	Date	Description

**Drawing Name**  
*Site Layout Plan*

**Issue Date**  
*February 11, 2005*  
**C-2.0**