

**GENERAL NOTES**

- The contractor is specifically cautioned that the location and/or elevation of existing utilities as shown on these plans is based on records and where possible measurements taken in the field. This information is not to be relied upon as being exact or complete. The contractor must call Tennessee One Call and any utility that does not subscribe to one call at least 72 hours before any excavation, to request the location of all utilities. The contractor is responsible for the accuracy and reliability of all existing utilities which conflict with the proposed improvements shown on the plans.
- Owner:  
Mercy Health Partners  
900 E. Oak Hill Avenue  
Knoxville, TN 37917  
Sundown Properties  
219 Matthews Cove Lane  
Knoxville, TN 37934  
Land Development Solutions  
310 Simmons Road, Suite K  
Knoxville, TN 37922  
Phone: 865-671-2281
- Property is located in Knox County and is zoned CA-General Business and OE Office, Medical and Related Services.
- Total Site Acreage = 84.25 Acres

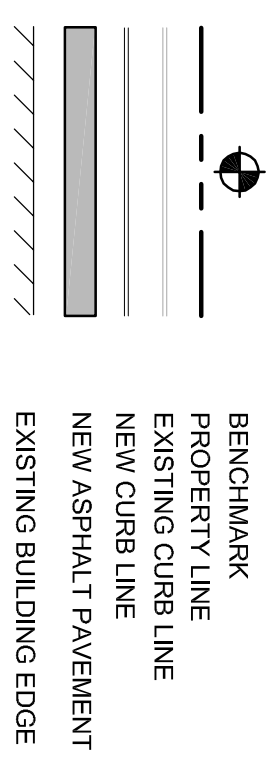
**CONTACT INFORMATION**

Water: Hallstead-Powell Utility District  
Sewer: Knoxville Utility Board  
Electric: Knoxville Utilities Board  
Knox County Engineering: 865-922-7547  
865-558-2555  
865-558-2555  
865-215-5900

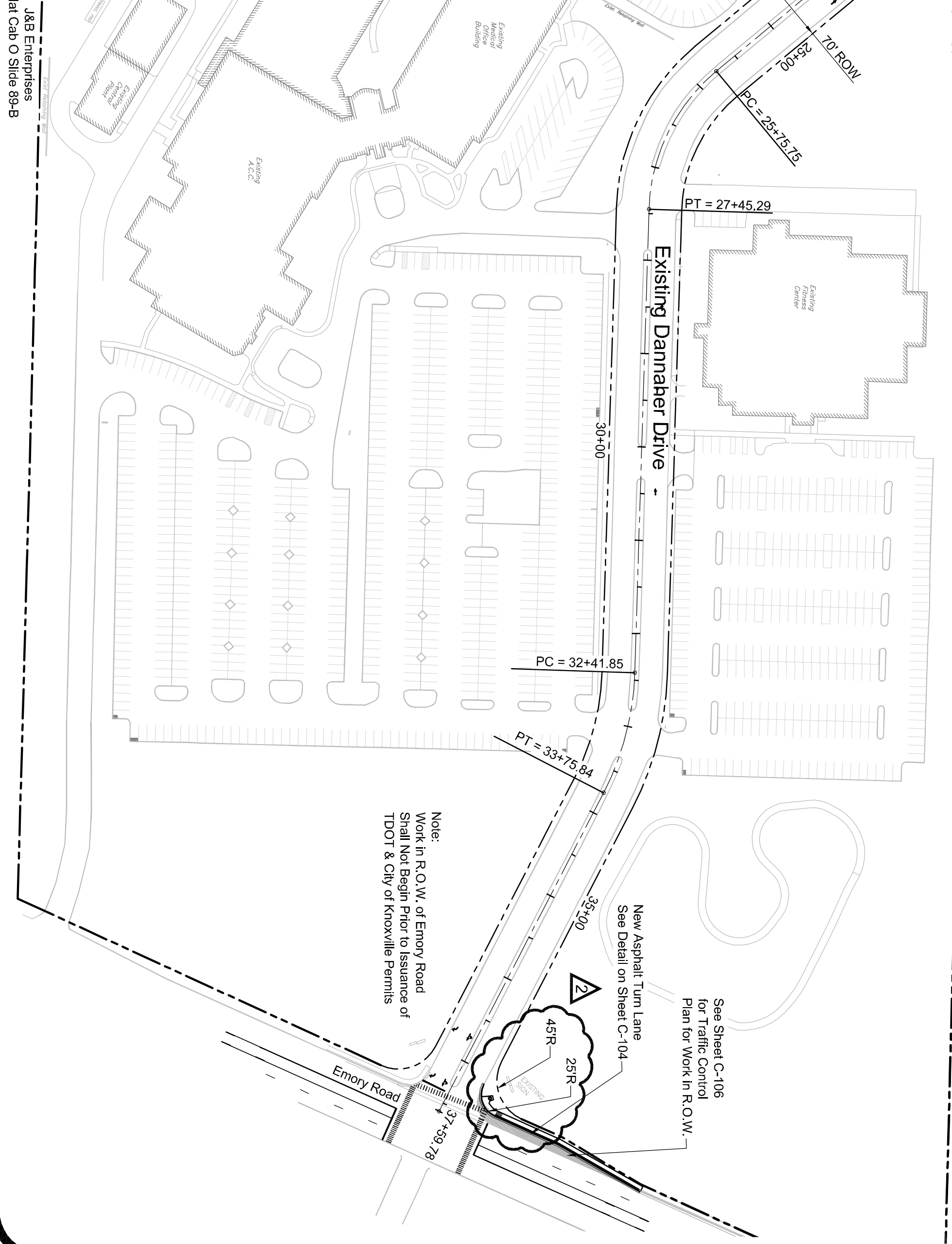
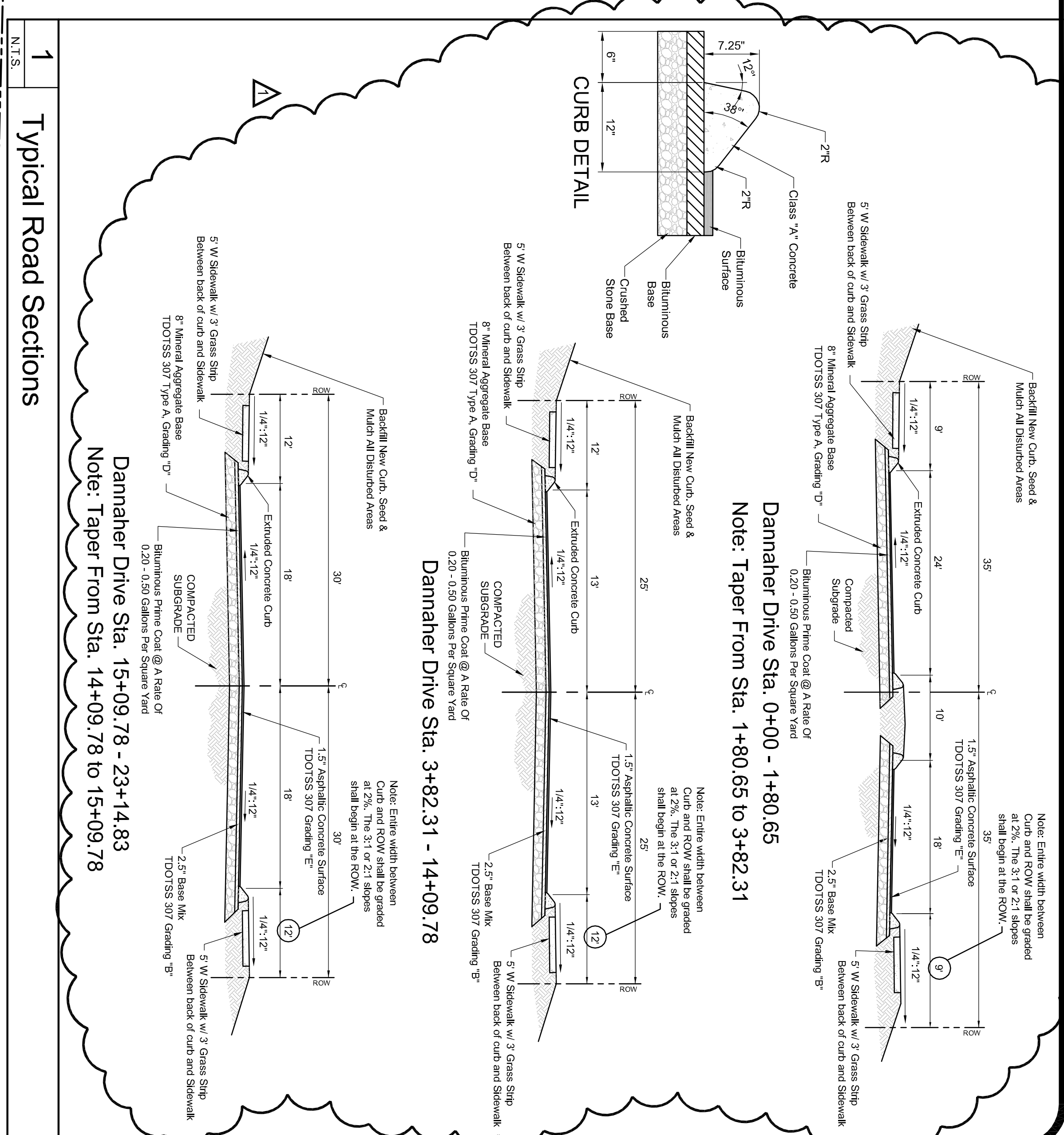
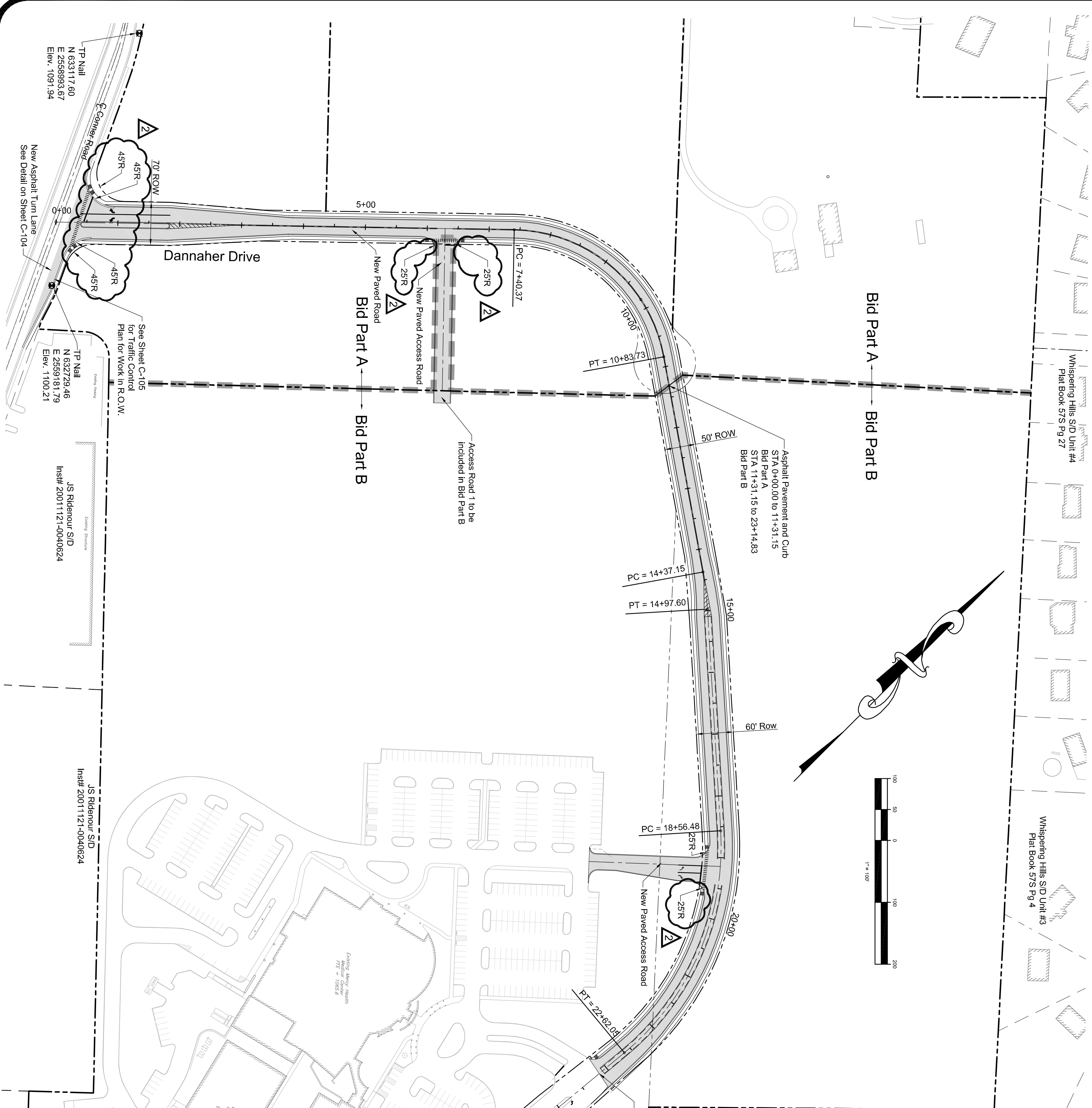
**LAYOUT NOTES**

- All dimensions to curb line reference face of curb - see detail.
- See Utility Plan for new and existing utility line locations. See Grading and Drainage Plan for new and existing storm drain locations.

**LEGEND**



Survey by:  
310 Simmons Road, Suite K  
Knoxville, TN 37922  
Phone: 865-671-2281



	Drawing Description: <b>Site Layout Plan Overall</b>	 310 SIMMONS RD., SUITE K-KNOXVILLE, TENNESSEE 37922 PH. 865-671-2281	Project: <b>Dannaher Drive Extension</b> Mercy Health Partners & Sundown Properties Knoxville, Tennessee
	Job No.: 210002-3 Date: 3-12-10		
No. 1 Date 4-12-10 Revision Knox County Engineering Comments	No. 2 Date 4-26-10 Revision Knox County Engineering Comments	Scale: 1"=100' Sheet No. C-101 Sheet 5 of 34	